

# 2019 HINO 258 LP

GVW: 25,500 LBS. BBC: 108"

ENGINE MODEL: J08E-VB 260HP 660 LB-FT TORQUE (AVAILABLE)



## TRUCKS

A Toyota Group Company

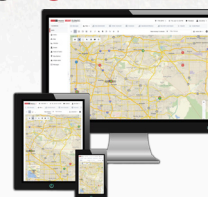
HINO INSIGHT CONNECTED VEHICLE



[WWW.HINO.COM](http://WWW.HINO.COM)

## TELEMATICS, CASE MANAGEMENT, REMOTE DIAGNOSTICS...**STANDARD.**

At Hino we're changing the way we support our vehicles and customers so that your business is first. From the moment you take delivery of your Hino Insight equipped connected vehicle, you're on the road to more uptime and lower operating costs. Combining Telematics, Remote Diagnostics and Case Management in one integrated platform, Hino Insight puts critical vehicle and driver management tools at your fingertips.



# 2019 HINO 258 LP



ENGINE		
Model	STD Hino J08E-WU	OPT Hino J08E-VB
Max. output at 2,500 rpm (SAE Gross)	230hp	260hp
Max. torque at 1,500 rpm (SAE Gross)	520 lb.-ft.	660 lb.-ft.
Type	Diesel 4-cycle, 6 cylinder in-line, water-cooled, dry cylinder liners	
Fuel System	Common rail, direct injection type (Denso)	
Engine displacement	8L	
Bore and Stroke	4.41 x 5.12 in.	

POWERTRAIN AND PERFORMANCE		
Transmission	Type	Six speed automatic
	Model	STD Allison 2200RDS w/ Fuelsense 2.0
Ratios	1st	3.102
	2nd	1.811
	3rd	1.406
	4th	1
	5th	0.712
	6th	0.614
	Rev.	-4.492
GVW (lbs.)	25,500	

230 HP	GCWR* (lbs.)	26,000				
	Rear Axle Gear Ratios	STD 4.11	OPT 4.33	OPT 4.63	OPT 4.88	OPT 5.13
	Gradeability (% of grade)	31.8	33.8	36.5	38.8	41.2
260 HP	GCWR* (lbs.)	26,000				
	Rear Axle Gear Ratios	STD 4.11	OPT 4.33	OPT 4.63	OPT 4.88	OPT 5.13
	Gradeability (% of grade)	42	44.7	48.6	52	55.5

CHASSIS EQUIPMENT	
Fuel Tank	STD 50 gallon OPT Dual 50 gal./Single 70 gal./Single 95 gal.
DEF tank	4.7 gal.

DIMENSIONS/WEIGHTS									
Wheelbase (in.)	152/G	175/J	187/L	205/M	212/N	217/P	235/R	253/T	271/V
Useable cab to axle (in.)	84.6	107.6	119.6	137.6	144.6	149.6	167.6	185.6	203.6
Rear overhang (in.)	50	63	75	75	50	97	97	97	79
Frame height at front axle (in.)	33.3	33.3	33.3	33.3	33.3	33.3	33.3	33.3	33.3
Frame height at rear axle (in.)	35.4	35.4	35.4	35.4	35.4	35.4	35.4	35.4	35.4
Std. chassis weight (lbs.)	9,470	9,415	9,470	9,580	9,535	9,690	9,735	9,765	9,830

FRAME	
Ladder type	Straight C channel
Width (in.)	34
Yield strength (PSI)	80,000
Resisting bending moment (one side, no reinforcement) in.-lbs.	152" WB 1,280,000 All others 1,031,900

AXLE/SUSPENSION	
Front axle	MFS-8 series reverse Elliot, "I" beam (oil lubricated)
Front spring	Taper-leaf springs with shock absorbers
Rear axle	RS17-145, full floating, single reduction, single-speed, hypoid gearing

Rear Suspension STD Spring Semi-elliptic main	
OPT Air ride suspension - Hendrickson	
OPT Air ride suspension - dump valve (electric), single & dual valve	

ELECTRICAL EQUIPMENT	
Batteries	STD Two, parallel connection, 1300 CCA (GR 31) OPT Multiple two battery choices OPT Multiple Three battery choices
Alternator	STD 12V, 130A, Delco (brush) OPT 12V, 135A (brushless)/180A (brush)/200A (brush)
Starter	Denso-12V, 4.8kW

WHEELS/TIRES/BRAKES	
6 Wheels	Steel 19.5X7.5 10-stud disc powder coated white OPT Powder coated gray, or Polished aluminum
6 Tires	245/70R19.5-16(BS), Fr-Rib, Rr-All Season

Service brake	Hydraulic system with disc brake for front and rear wheels
Exhaust brake	Electric-pneumatic with valve in exhaust pipe
Parking brake	Lever control with cable, internal expanding drum type

WEIGHT CAPACITIES	
Front axle/susp	lbs. 8,000/8,000
Rear axle/susp	lbs. 17,500/19,000

WHY DRIVERS LOVE OUR TRUCKS	
Bluetooth AM/FM radio with CD player	
Air Ride Drivers Seat	
Air Conditioning	
Cruise Control	
Tilt and Telescopic Steering Wheel	
55 Degree wheel cut	
80 Degree Door Opening	
4007 sq. in. windshield area	

WHY OWNERS LOVE OUR TRUCKS	
ENGINE WARRANTY STD - 5 years/250,000 miles	OPT - 7 years/150,000 miles
HINOCARE	OPT - Preventive care extension
HINOWATCH	24/7 Roadside Assistance
HINO INSIGHT	Telematics by Telogis Remote Diagnostics Case Management
	STD 1 Year OPT 3 & 5 Yr STD 5 Years STD 5 Years

POPULAR OPTIONAL EQUIPMENT (partial list)	
Allison Fuel Sense Plus / Max	
Anti-siphon device insert in fuel tank	
Back-up alarm	
Cab paint, exterior - custom (factory)	
Engine idle shutdown	
Exhaust system - vertical stack type	
Mirrors, fender mounted-chrome (both sides or passenger only)	
Mirrors, outside rearview-chrome	
Mirrors-power heated (available in chrome)	
Power windows and door locks (available with keyless entry)	
Programmable speed limit 65,70 mph	
Rear helper spring-sub leaf type	
Stabilizer bar, rear (leaf suspension only)	